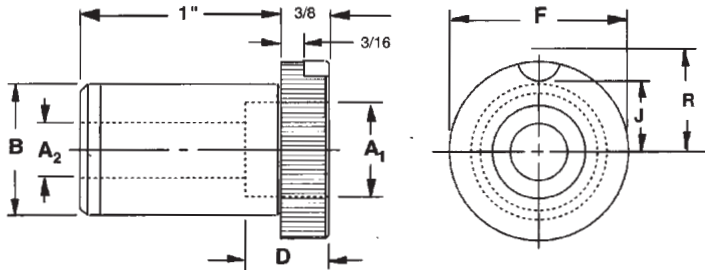


Stock Liners - Type GDL

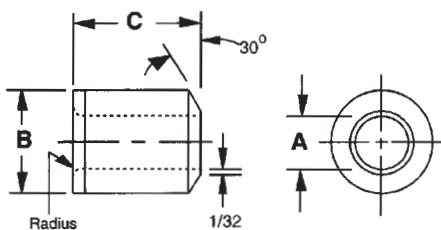


DME Gun Drill Liners are designed to be used with the replaceable inserts indicated in the table below. All type GDL Bushings are ground concentric within .0002" T.I.R. The heads are undercut and ground square with outside diameters so the liner will seat flat against the chip box.

Part Number	Description	A ₁ +.0002 -.0000	A ₂ ±.005	B O.D. Size		D	Head Dimensions			Lockscrew	Insert Used
				Nominal	Actual		F	J	R		
A51210	GDL-64-16	.2045	.125	1"	1.0000 .9998	7/16	1-27/64	19/32	59/64	2A-LS	GDI-13-8
A51212		.2515	.156								GDI-16-8
A51214		.3140	.218								GDI-20-8
A51216		.5016	.406								GDI-32-8
A51218		.7517	.625								GDI-48-8
A51240	GDL-88-16	.2045	.125	1-3/8	1.3750 1.3748	7/16	1-51/64	25/32	1-7/64	2A-LS	GDI-13-8
A51242		.2515	.156								GDI-16-8
A51244		.3140	.218								GDI-20-8
A51246		.5016	.406								GDI-32-8
A51248		.7517	.625								GDI-48-8
A51250		1.0017	.875			11/16	1-51/64	25/32	1-7/64	2A-LS	GDI-64-12

In Stock Inserts - Type GDI

STOCK SIZES FROM .0781 - .7500
CALL FOR STOCK SIZES



DME Gun Drill Inserts are manufactured from thru-hardened tool steel and heat treated to 62-64 RC for longer life. The I.D., O.D., and face of GDI Bushings are ground concentric and square within .0002" T.I.R.

Inserts are stocked in standard drill sizes only. Special I.D. sizes and special materials (ie. Carbide or Titanium Nitride coating) are available to meet your requirements.

Description	A I.D. Range +.0002 / -.0000	B O.D. Size		C Length
		Nominal	Actual	
GDI-13-8	5/64 - #39 (.0781) (.0995)	13/64	.2047 .2044	1/2
GDI-16-8	#38 - 9/64 (.1015) (.1406)	1/4	.2517 .2514	1/2
GDI-20-8	#27 - #10 (.1440) (.1935)	5/16	.3142 .3139	1/2
GDI-32-8	13/64 - O (.2031) (.3160)	1/2	.5018 .5015	1/2
GDI-48-8	P - 17/32 (.3230) (.5312)	3/4	.7519 .7516	1/2
GDI-64-12	9/16 - 3/4 (.5625) (.7500)	1"	1.0019 1.0016	3/4